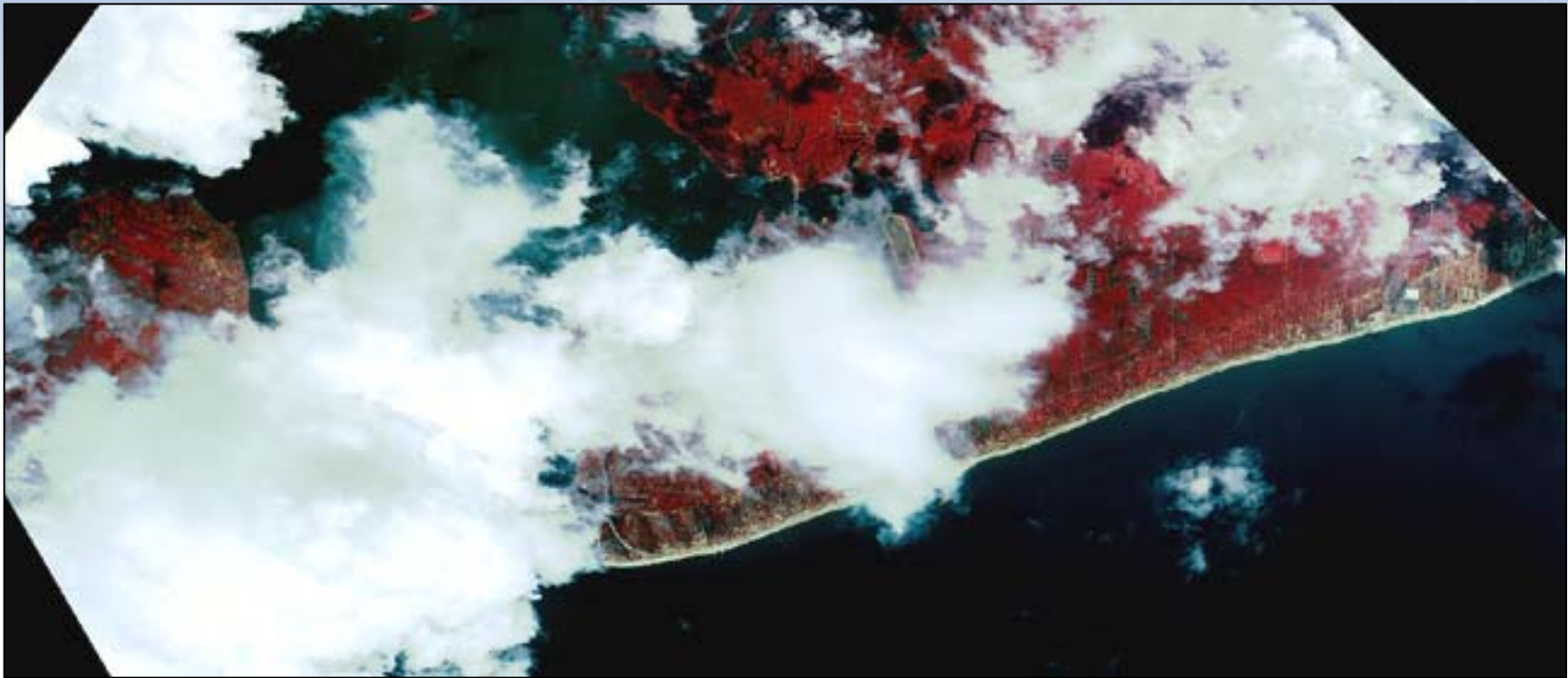
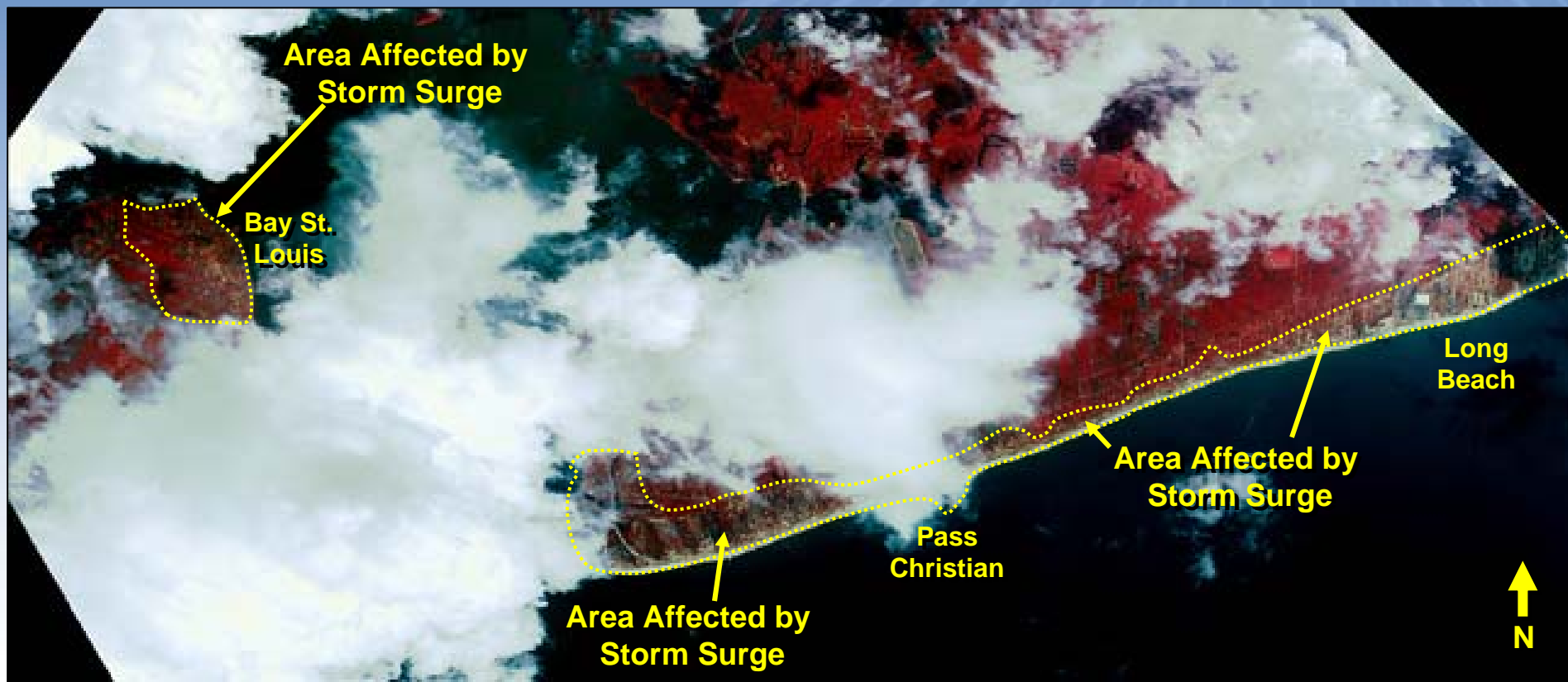


DIGITALGLOBE™

***Aftermath of Hurricane Katrina :
Bay St. Louis - Long Beach, MS
August 31, 2005***



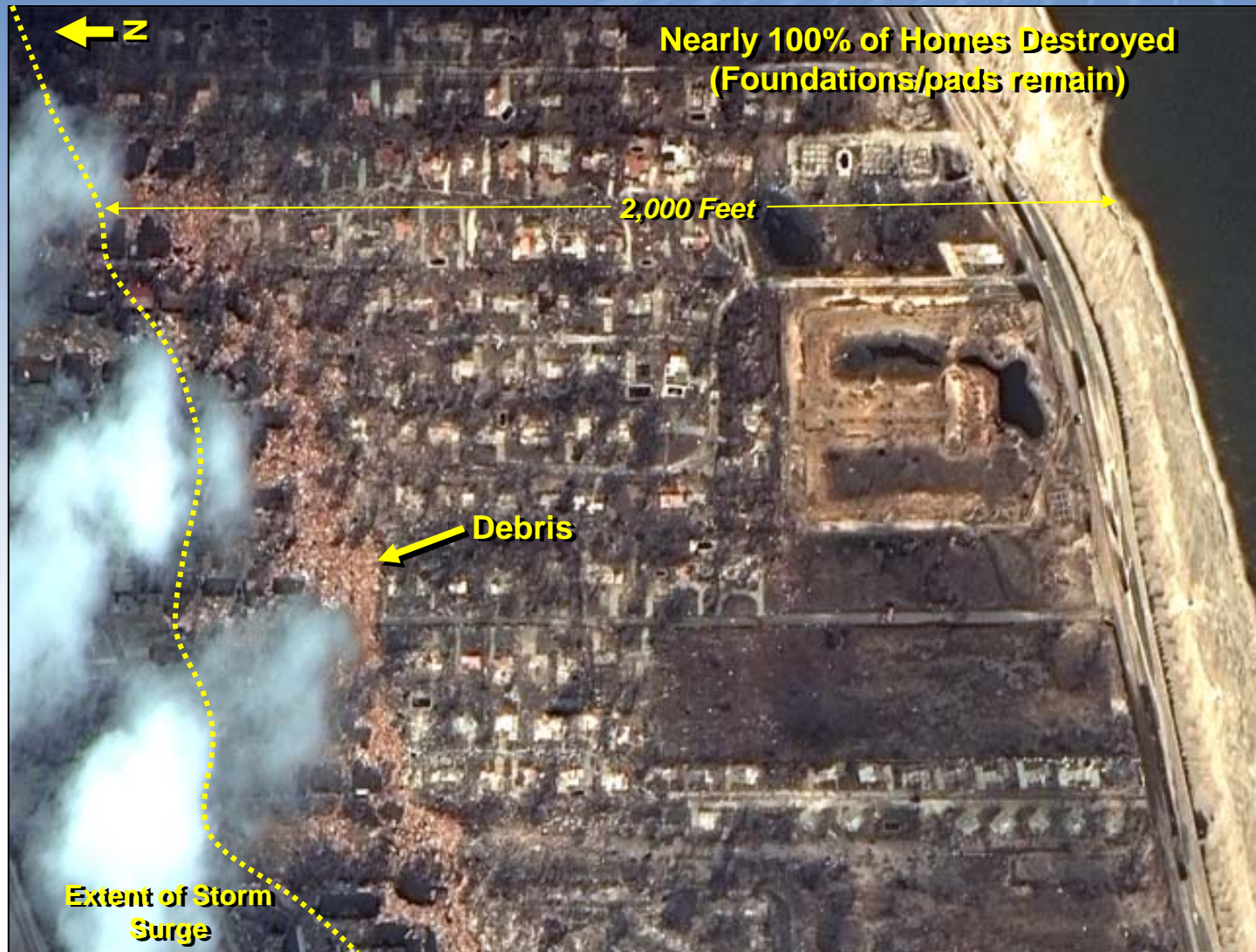
Primary Areas of Damage



QuickBird False Color Pan-Sharpended Image
Coastal Mississippi
August 31, 2005

Assessment: Nearly 100% of the single family residential units were destroyed in the storm surge zone shown above on this portion of the coast. Severe wind-induced roof damage occurred to structures inland of the surge area, with some homes completely destroyed.

Long Beach: Damage to Residential Areas



QuickBird Natural Color Image
August 31, 2005

Long Beach: Damage to Residential Areas

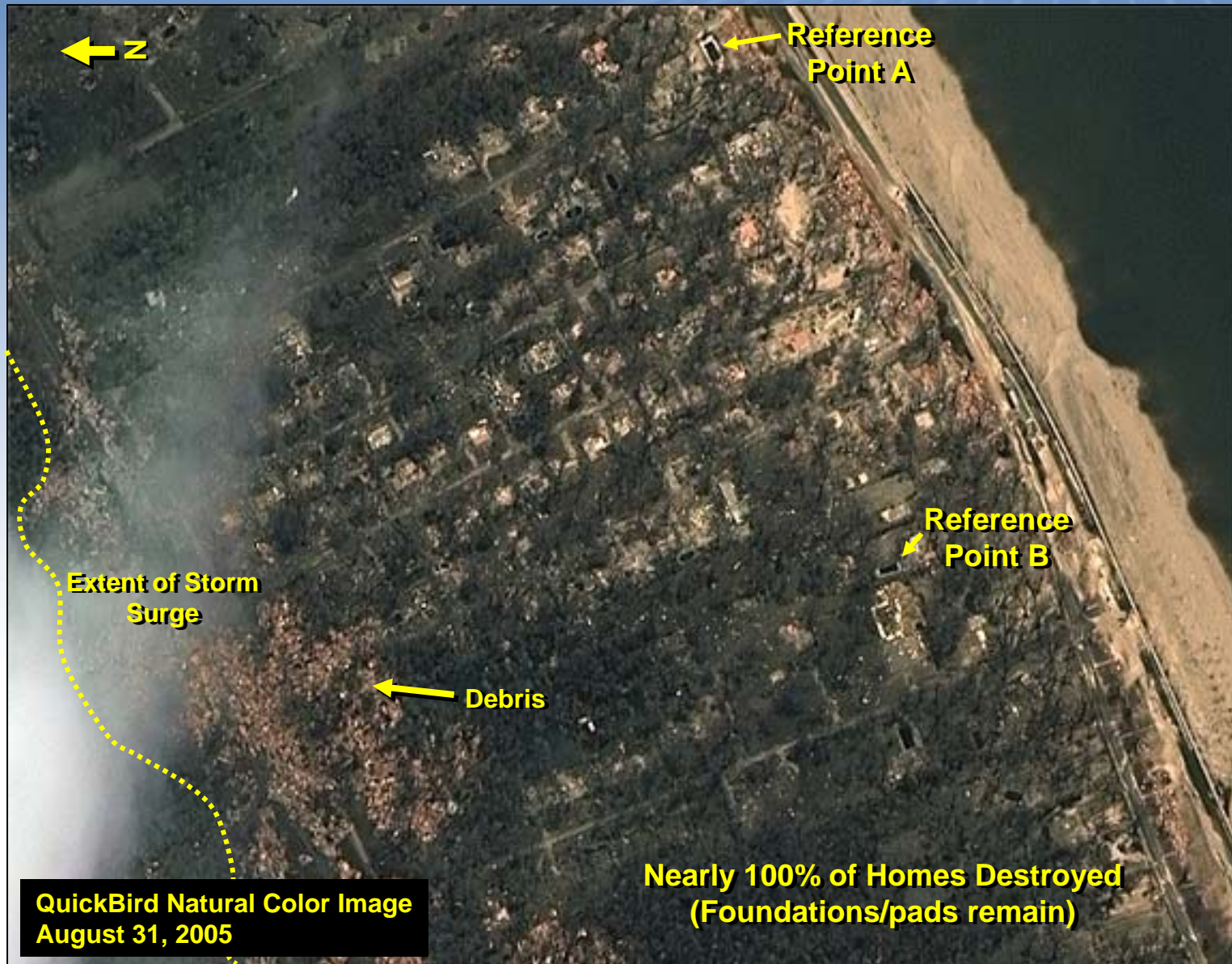


QuickBird False Color Image
August 31, 2005

Pass Christian: Damage to Residential Areas



Pass Christian: Damage to Residential Areas



Pass Christian: Damage to Residential Areas



QuickBird Natural Color Image
Pre-Hurricane, 2004

Pass Christian: Damage to Residential Areas



QuickBird Natural Color Image
August 31, 2005

Pass Christian: Damage to Infrastructure



Bay St. Louis: Damage to Residential Areas



Bay St. Louis: Damage to Residential Areas

Nearly 100% of Homes Destroyed
(Foundations/pads remain)

N ←

Reference
Point A →

Reference
Point B
(see next page) ←

Extent of Storm
Surge

QuickBird Near Infrared Image
August 31, 2005

